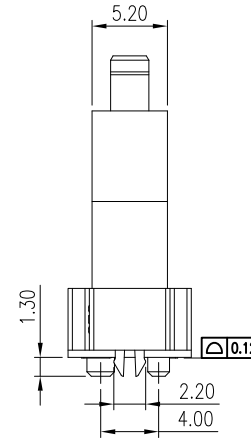
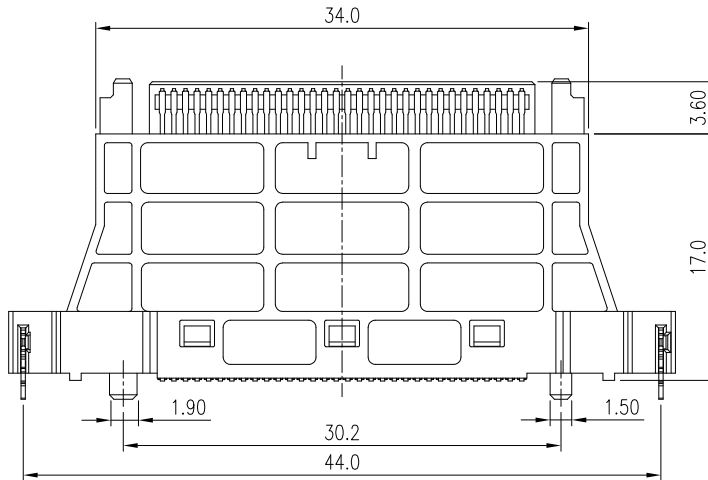
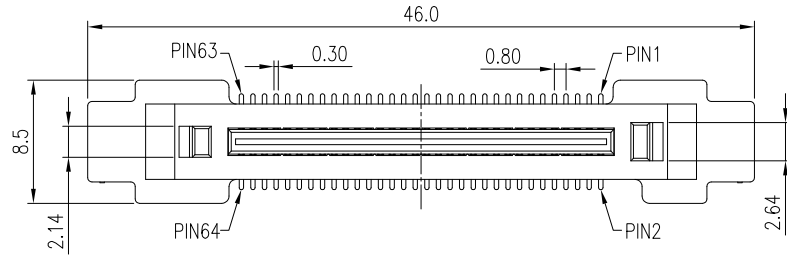


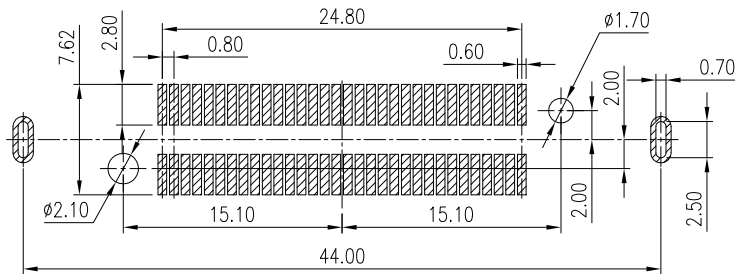
PROPRIETARY INFORMATION
COMPANY CONFIDENTIAL

REV.	ECN. NO.	DESCRIPTION	ENG	DATE
X1		INITIAL	AXL	2/17/2016



NOTES :

- MATERIAL
HOUSING: LCP, UL94V-0, BLACK
TERMINAL: BRASS
BOARDLOCK: BRASS
- PLATING:
TERMINAL:
CONTACT AREA: GOLD FLASH PLATING
SOLDER TAIL: 80u" TIN PLATING
UNDER PLATING: 30u" NICKEL OVERALL
BOARDLOCK: 30u" NICKEL PLATING
- CURRENT RATING: 0.5A
- DIELECTRIC WITHSTANDING VOLTAGE: 500VAC FOR 1 MINUTE.
- INSULATION RESISTANCE: 100Mohms min.
- 5Gbps min. COMPLIANT.
- DESIGN TO MATE WITH 110-10008.
- TRAY PACKAGING.



RECOMMENDED PCB LAYOUT
TOLERANCE: ±0.05mm

GENERAL TOLERANCE	ANGLE TOLERANCE	DRAWN	DATE		
X ± 0.50	X° ± 5.0°	AXL	2/17/16'		
.X ± 0.40	.X° ± 3.0°	CHECKED	DATE	PART NUMBER: 110-10007-01	
.XX ± 0.30	.XX° ± 2.0°	APPROVED	DATE	DRAWING NO. 110-10007	
.XXX ± 0.20	.XXX° ± 1.0°			SIZE A4	
MATERIAL: SEE BOM				REV. X1	
FINISH: SEE NOTES					
SCALE: N/A	UNIT: mm				
SHEET 1 OF 1					