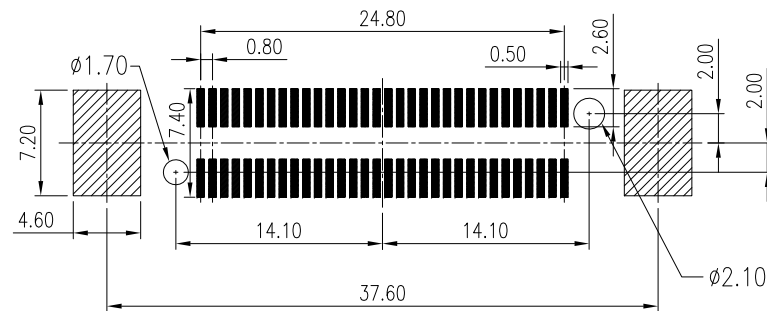
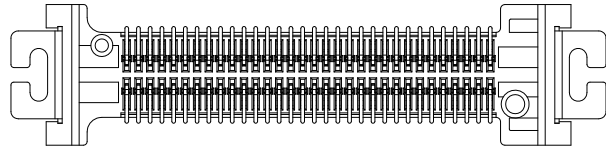
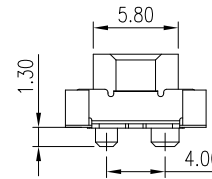
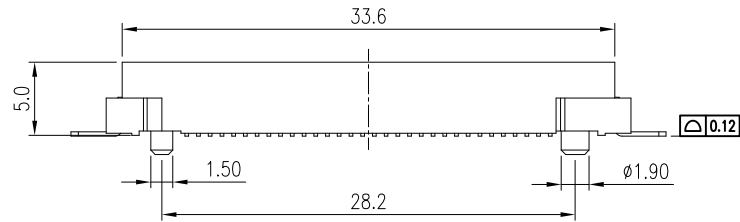
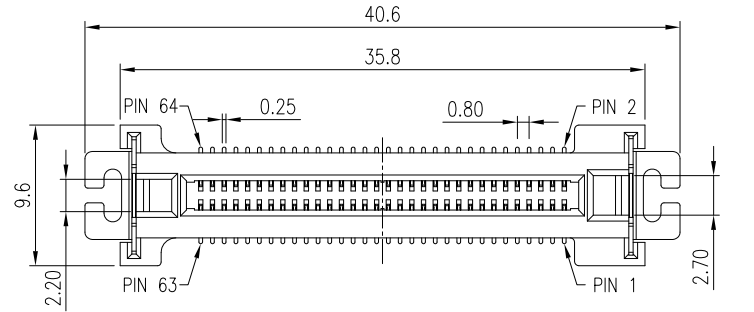


PROPRIETARY INFORMATION  
COMPANY CONFIDENTIAL

REV.	ECN. NO.	DESCRIPTION	ENG	DATE
X1		INITIAL	AXL	2/17/2016



RECOMMENDED PCB LAYOUT  
TOLERANCE: ±0.05mm

NOTES :

- MATERIAL  
HOUSING: LCP, UL94V-0, BLACK  
TERMINAL: PHOSPHOR BRONZE  
BOARDLOCK: BRASS
- PLATING:  
TERMINAL:  
CONTACT AREA: GOLD FLASH PLATING  
SOLDER TAIL: 80u" TIN PLATING  
UNDER PLATING: 30u" NICKEL OVERALL  
BOARDLOCK: 30u" NICKEL PLATING
- CURRENT RATING: 0.5A
- DIELECTRIC WITHSTANDING VOLTAGE: 500VAC FOR 1 MINUTE.
- INSULATION RESISTANCE: 100Mohms min.
- 5Gbps min. COMPLIANT.
- DESIGN TO MATE WITH 110-10007.
- TRAY PACKAGING.

GENERAL TOLERANCE X.± 0.50 .X± 0.40 .XX± 0.30 .XXX± 0.20	ANGLE TOLERANCE X°± 5.0° .X°± 3.0° .XX°± 2.0° .XXX°± 1.0°	DRAWN AXL	DATE 2/17/16'	 TITLE: HIGH SPEED B TO B 5Gbps FEMALE INTERFACE PART NUMBER: 110-10008-01
MATL SEE BOM	FINISH SEE NOTES	CHECKED	DATE	
SCALE N/A	UNIT mm	APPROVED	DATE	DRAWING NO. 110-10008
SHEET 1 OF 1				SIZE A4 REV. X1