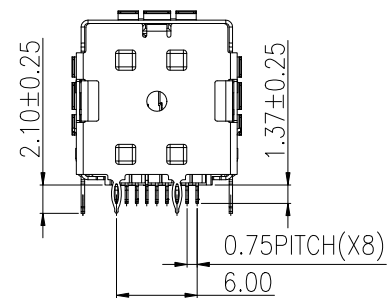
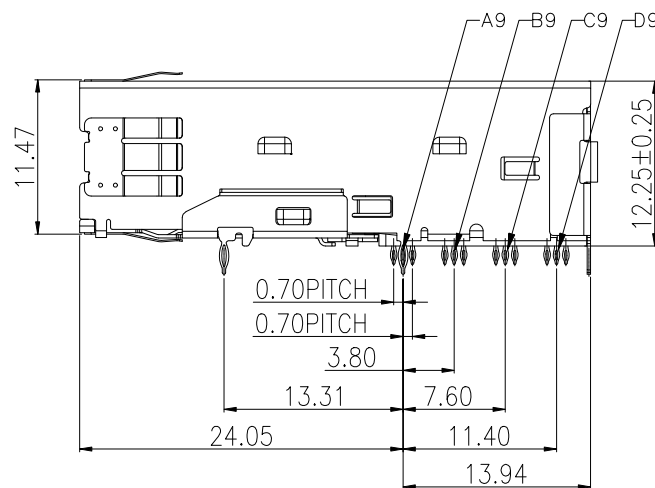
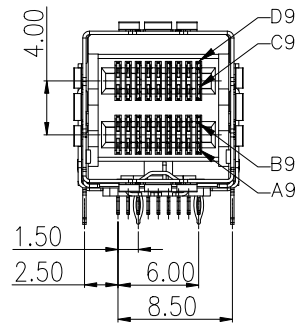
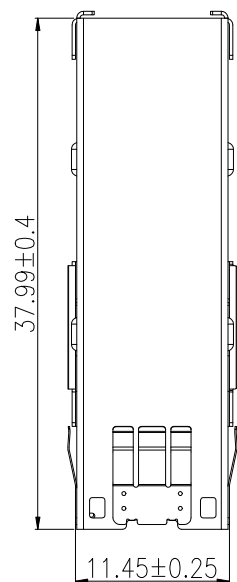


PROPRIETARY INFORMATION  
COMPANY CONFIDENTIAL

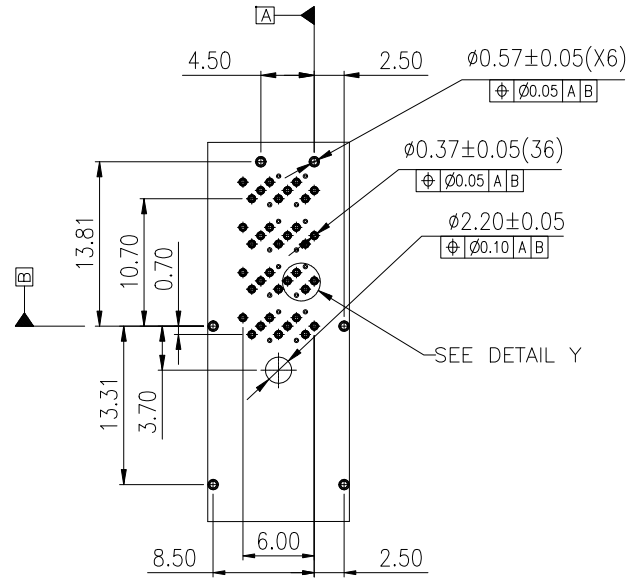
REV.	ECN. NO.	DESCRIPTION	ENG	DATE
A		INITIAL	Sun	3/18/2016



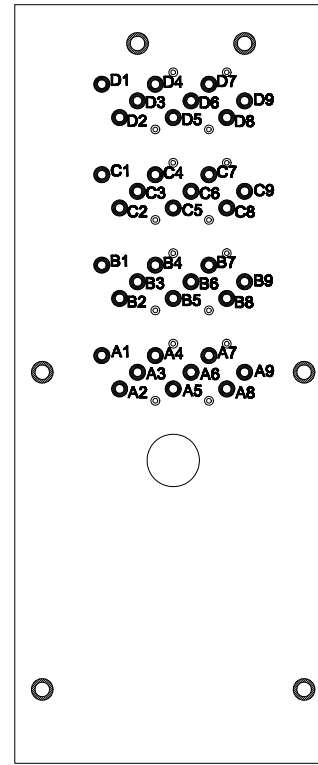
GENERAL TOLERANCE X.±0.50 .X±0.38 .XX±0.25 .XXX±0.15	ANGLE TOLERANCE X°± 5.0° .X°± 3.0° .XX°± 2.0°	DRAWN <i>Sun</i>	DATE 3/18/16'	 <b>GENESIS TECHNOLOGY, INC.</b> TITLE: MINI SAS HD CONN/GAGE 1*1 DIP TYPE. PART NUMBER: 230-10014-01
MATL SEE BOM	FINISH SEE NOTES	CHECKED	DATE	
SCALE N/A	UNIT mm	APPROVED <i>River</i>	DATE 3/18/16'	DRAWING NO. 230-10014
SHEET 1 OF 2				SIZE A4 REV. A

3	SHEEL	1	COPPER ALLOY
2	TERMINAL	36	PHOSPHOR COPPER,GOLD 30u" ON CONTACT AREA,MATTE TIN 100u" ON SOLDER AREA,60u" NICKEL UNDER PLATING OVERALL
1	HOUSING	1	LCP,COLOR BLACK
ITEM	NAME	Q'TY	DESCRIPTION

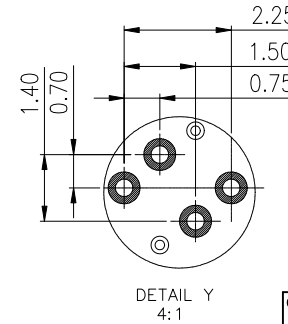
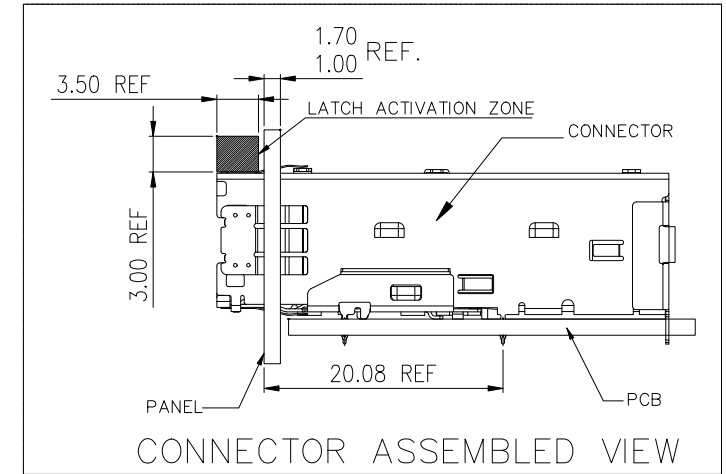
UL94-V0  
NOTE



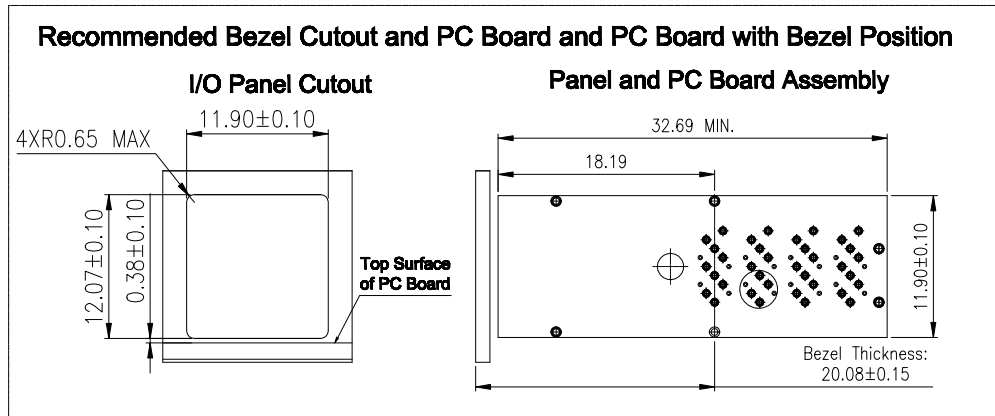
Recommended P.C.B Layout (Component Side)  
P.C.B Thickness 1.37 mm; Tolerance  $\pm 0.05$



Recommended P.C.B Layout (Component Side)  
SCALE (2 : 1)



DETAIL Y  
4:1



GENERAL TOLERANCE X. $\pm 0.50$ .X $\pm 0.38$ .XX $\pm 0.25$ .XXX $\pm 0.15$	ANGLE TOLERANCE X' $\pm 5.0^\circ$ .X' $\pm 3.0^\circ$ .XX' $\pm 2.0^\circ$	DRAWN Sun 3/18/16'	DATE	 TITLE: MINI SAS HD CONN/GAGE 1*1 DIP TYPE.	
MATL SEE BOM	FINISH SEE NOTES	CHECKED	DATE		PART NUMBER 230-10014-01
SCALE N/A	UNIT mm	APPROVED River 3/18/16'	DATE	DRAWING NO. 230-10014	SIZE A4 REV. A
SHEET 2 OF 2					