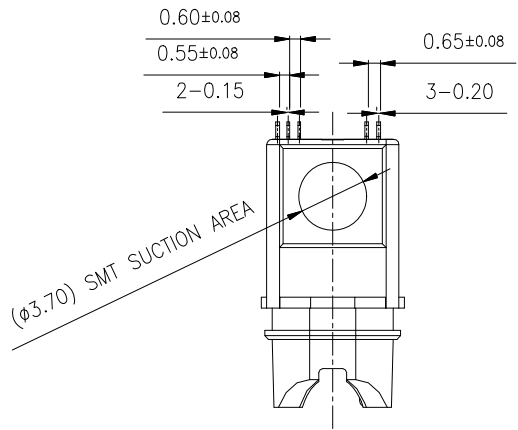
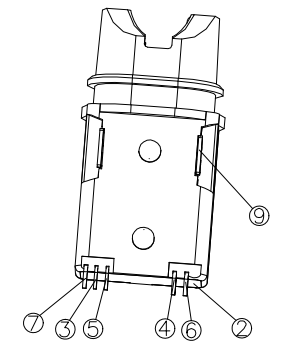


| REV. | ECN. NO. | DESCRIPTION | ENG | DATE |
|------|----------|-------------|-----|----------|
| A | | ISSUED | SUN | 3/28/16' |

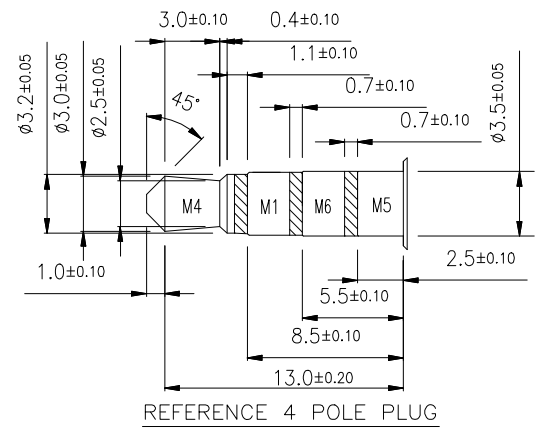
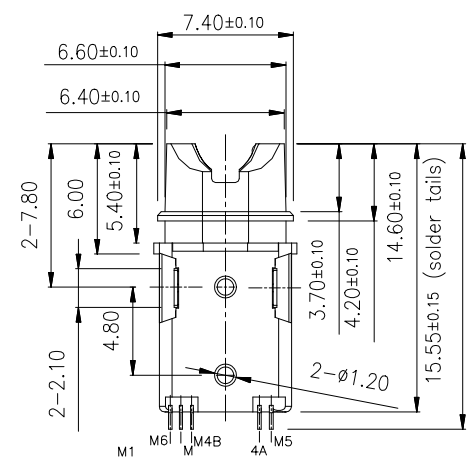
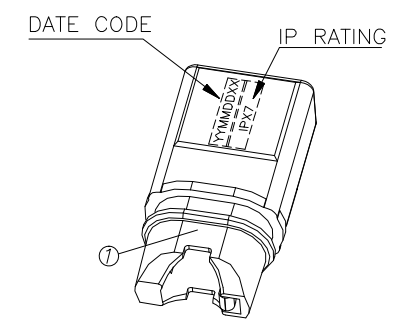
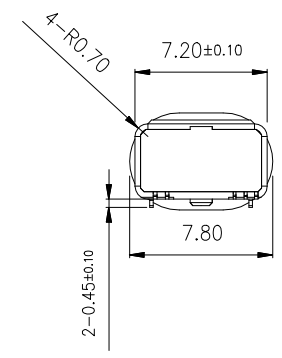
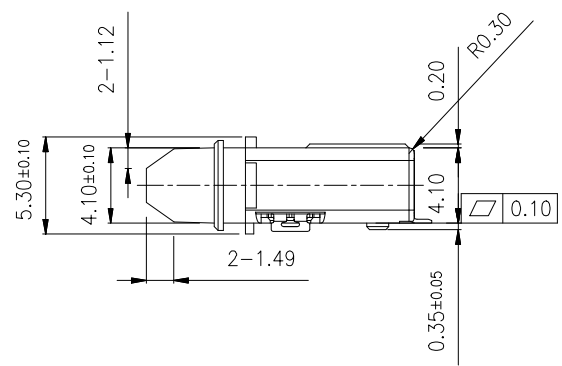
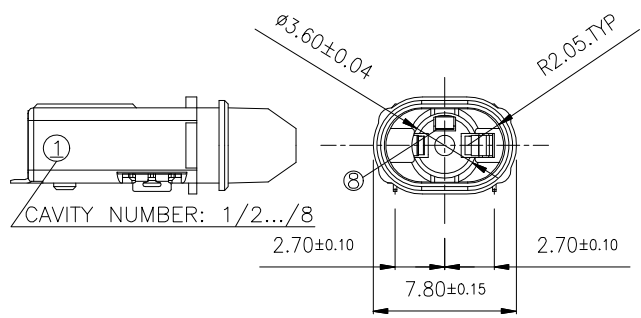
NOTES:
1.WATERPROOF LEVEL:IP67



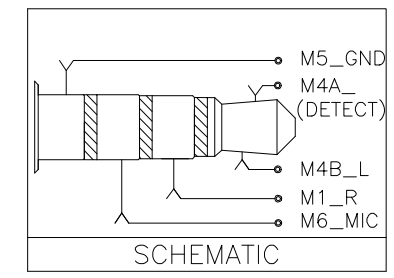
DATE CODE:
YYMMDDXX
XX:LINE
DD:DAY(01~31)
MM:MONTH (01~12)
YY:YEAR (15~)



NOTE: ①~⑨ ITEM NO.



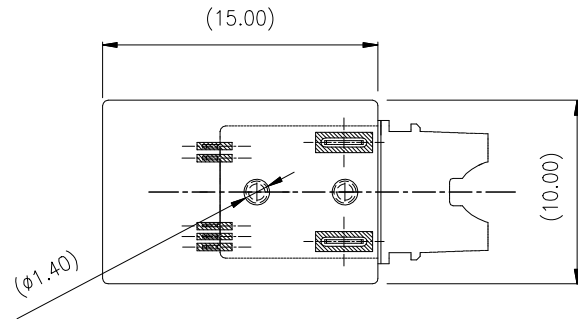
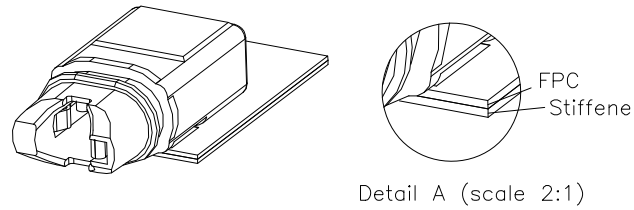
REFERENCE 4 POLE PLUG



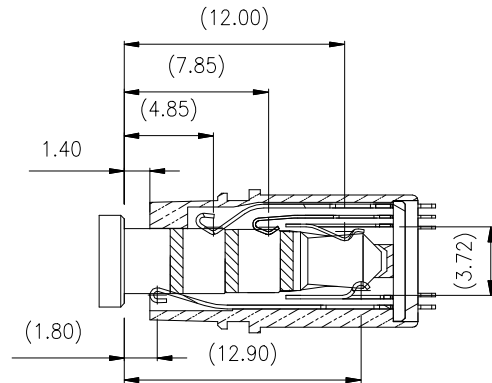
| 1 | HOUSING | 1 | PA6T+30%,COLOR BLACK | UL94V-0 |
|----|--------------|-----|---|---------|
| 2 | CAP | 1 | PA6T+30%,COLOR BLACK | UL94V-0 |
| 3 | M1 CONTACT | 1 | PHOSPHOR BRONZE,GOLD 5u" CONTACT AREA PLATING,GOLD FLASH PLATING ON OVERALL,50u" NICKEL UNDERPLATED OVERALL | |
| 4 | M4A CONTACT | 1 | COPPER ALLOY,GOLD 5u" CONTACT AREA PLATING,GOLD FLASH PLATING ON OVERALL,50u" NICKEL UNDERPLATED OVERALL | |
| 5 | M4B CONTACT | 1 | COPPER ALLOY,GOLD 5u" CONTACT AREA PLATING,GOLD FLASH PLATING ON OVERALL,50u" NICKEL UNDERPLATED OVERALL | |
| 6 | M5 CONTACT | 1 | PHOSPHOR BRONZE,GOLD 5u" CONTACT AREA PLATING,GOLD FLASH PLATING ON OVERALL,50u" NICKEL UNDERPLATED OVERALL | |
| 7 | M6 CONTACT | 1 | PHOSPHOR BRONZE,GOLD 5u" CONTACT AREA PLATING,GOLD FLASH PLATING ON OVERALL,50u" NICKEL UNDERPLATED OVERALL | |
| 8 | ASSISTAN PIN | 1 | SUS304,40u" MATTE TIN PLATING OVER 50u" NICKEL UNDERPLATING OVERALL | |
| 9 | M4F | 1 | SUS304,DUMMY PIN | |
| NO | PART NAME | QTY | DESCRIPTION | NOTE |

| | | | | |
|-------------------|----------------------|----------|----------|---|
| GENERAL TOLERANCE | ANGLE TOLERANCE | DRAWN | DATE | |
| All± 0.15 | X°± 5.0° X°± 3.0° | SUN | 3/28/16' | |
| MATL | SEE BOM | CHECKED | DATE | TITLE: Water proof Audio Jack Water proof level:IP67 |
| FINISH | SEE NOTES | APPROVED | DATE | PART NUMBER: 260-10005-01 |
| SCALE | N/A | UNIT | mm | DRAWING NO. 260-10005 |
| SHEET | 1 OF 2 | APPROVED | DATE | SIZE A4 REV. A |
| | | River | 3/28/16' | |

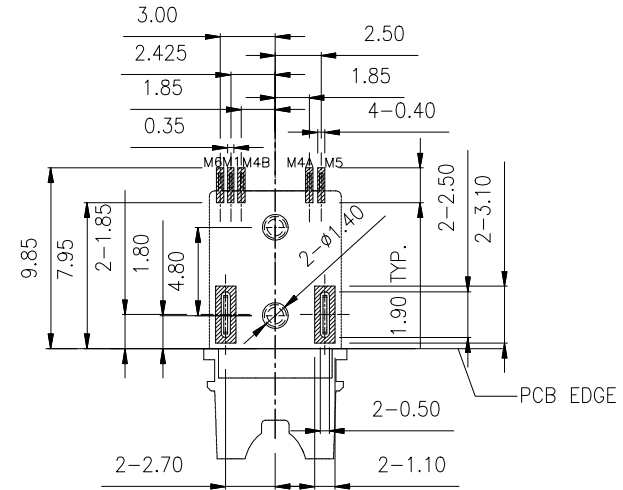
| REV. | ECN. NO. | DESCRIPTION | ENG | DATE |
|------|----------|-------------|-----|----------|
| A | | ISSUED | SUN | 3/28/16' |



Suggested stiffener thickness for FPC: 0.15mm Min.
 Stable support structure for the FPC is must
 Above outline and dimension for the stiffener only for reference

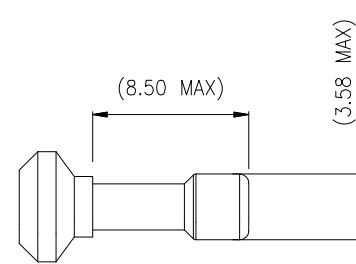


CROSS SECTION MATING REFERENCE DRAWING



RECOMMENDED PADS LAYOUT
 <TOP VIEW>

NOTE : TOLERANCE FOR PCB LAYOUT IS ± 0.05



METAL DUST PLUG REFERENCE DRAWING

| GENERAL TOLERANCE | ANGLE TOLERANCE | DRAWN | DATE | GENESIS TECHNOLOGY, INC. | |
|-------------------|---|----------|----------|---|--|
| All ± 0.15 | $X^\circ \pm 5.0^\circ$ $.X^\circ \pm 3.0^\circ$ | SUN | 3/28/16' | TITLE: Water proof Audio Jack Water proof level:IP67 | |
| MATL SEE BOM | | CHECKED | DATE | PART NUMBER: 260-10005-01 | |
| FINISH SEE NOTES | | APPROVED | DATE | DRAWING NO. 260-10005 | |
| SCALE N/A | UNIT mm | River | 3/28/16' | SIZE A4 REV. A | |
| SHEET 2 OF 2 | | | | | |