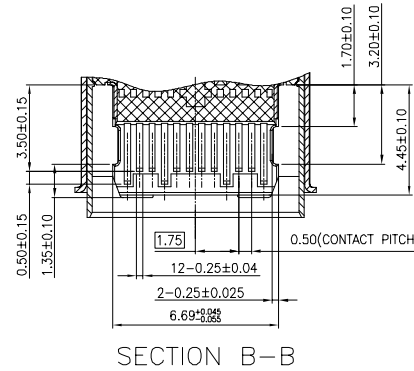
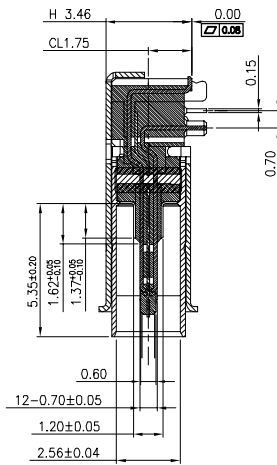
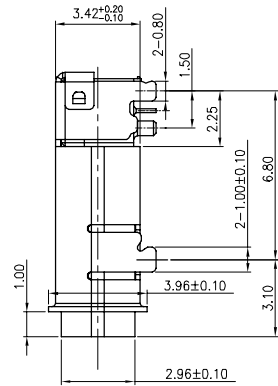
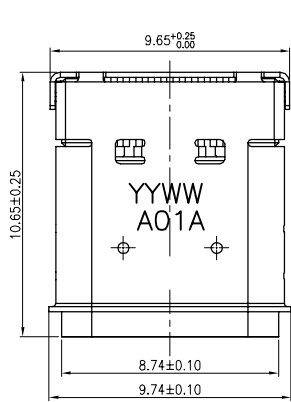


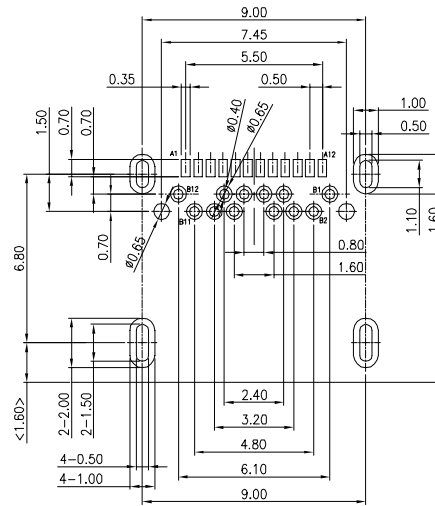
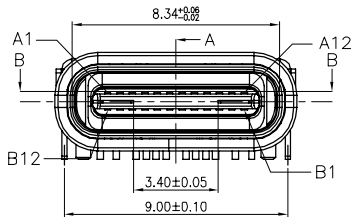
PROPRIETARY INFORMATION  
COMPANY CONFIDENTIAL

REV.	ECN.	NO.	DESCRIPTION	ENG	DATE
X1			INITIAL	Hunter	04/06/17

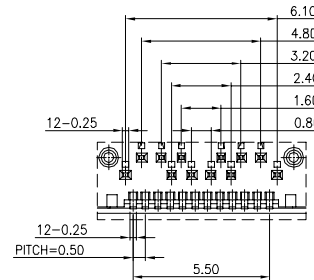
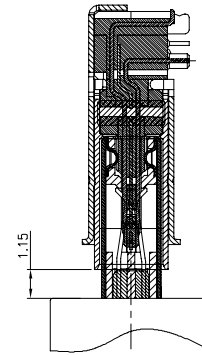


Pin	Signal Name	Mating Sequence	Pin	Signal Name	Mating Sequence
A1	GND	First	B12	GND	First
A2	SSTXp1	Second	B11	SSRXp1	Second
A3	SSTXn1	Second	B10	SSRXn1	Second
A4	V <sub>bus</sub>	First	B9	V <sub>bus</sub>	First
A5	CC1	Second	B8	SBU2	Second
A6	Dp1	Second	B7	Dn2	Second
A7	Dn1	Second	B6	Dp2	Second
A8	SBU1	Second	B5	CC2	Second
A9	V <sub>bus</sub>	First	B4	V <sub>bus</sub>	First
A10	SSRXn2	Second	B3	SSTXn2	Second
A11	SSRXp2	Second	B2	SSTXp2	Second
A12	GND	First	B1	GND	First
SHELL	GND		SHELL	GND	

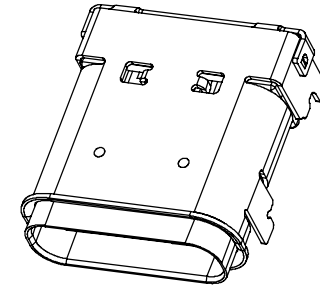
SECTION A-A



RECOMMEND P.C.B LAYOUT (COMPONENT SIDE)  
TOLERANCE FOR PCB LAYOUT IS ± 0.05  
KEEP OUT AREA



Detail A



NOTE:

- ELECTRICAL CHARACTERISTICS:
  - CONTACT RESISTANCE: 40mΩ Max FOR INITIAL, 10mΩ CHANGE AFTER TEST. MEASURE AT 20mV, 100mA.
  - CONTACT CURRENT RATING: 5A FOR COLLECTIVELY POWER SUPPLY PIN (PINA1, A4, A9, A12, B1, B4, B9, B12); 1.25A FOR V<sub>CONN</sub> PIN; 0.25A FOR OTHER SIGNAL PIN.
  - DIELECTRIC WITHSTANDING VOLTAGE: 100V AC R.M.S.
  - INSULATION RESISTANCE 100MΩ Min
  - OPERATING TEMPERATURE: -40°C ~ 85°C
- MECHANICAL CHARACTERISTICS:
  - MATING FORCE: 5~20 N.
  - UNMATED FORCE: 6~20N AFTER TEST
  - DURABILITY: 10,000 CYCLES
- PACKAGE: TAPE AND REEL

GENERAL TOLERANCE	ANGLE TOLERANCE	DRAWN	DATE	
X. ±0.50 .X ±0.30 .XX ±0.20 .XXX ±0.10	±2'	Hunter	04/06/17	
MATL SEE BOM		CHECKED	DATE	TITLE: USB 3.1 OF WATERPROOF CL1.75 H3.46mm DIP TYPE
FINISH SEE NOTES		Lucky	04/06/17	PART NUMBER: 260-10017-01
SCALE N/A	UNIT mm	APPROVED	DATE	DRAWING NO. 260-10017
SHEET 1 OF 1		Lucky	04/06/17	SIZE A4 REV. X1

3	OUT SHELL	1	SUS, NICKEL 40u" PLATING OVERALL
2	CONTACT	24	BRASS, GOLD FLASH PLATING ON CONTACT AREA, TIN 60u" MIN PLATING SOLDER AREA, NICKEL 40u" MIN UNDER PLATING OVERALL
1	HOUSING	1	LCP
ITEM	NAME	Q'TY	DESCRIPTION

NOTE

BLACK, UL94 V-0