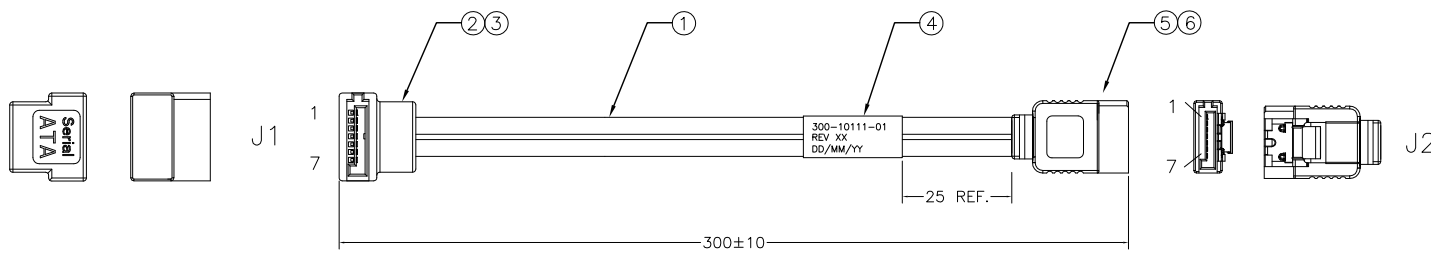


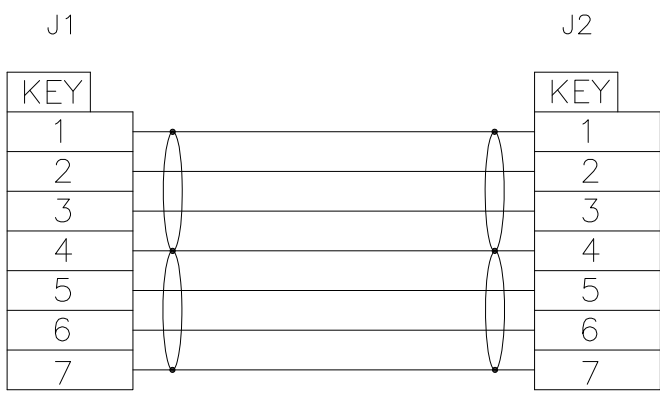
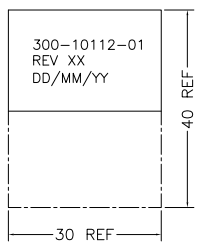
PROPRIETARY INFORMATION  
COMPANY CONFIDENTIAL

REV.	ECN. NO.	DESCRIPTION	ENG	DATE
X1		INITIAL	HSIO	7/21/2016



WIRING TABLE

LABEL INFORMATION



TEST CONDITIONS:  
100% TEST FOR ALL CABLE ASSEMBLIES  
1. OPEN & SHORT WITH MISS WIRING TEST  
2. CONDUCTIVE RESISTANCE: 1Ω MAX.  
3. HI-POT TEST: 300VDC 5MΩ MIN.

6	OVER MOLDING FOR SATA 7P 180°, 45P PVC, BLACK	P-SATPV-0002	1
5	SATA 7P CONN, SOLDER TYPE, G/F	PBQ-023BB-A1-1	1
4	LABEL, 30*40MM, WRAPPING AROUND	L-01-C-0001	1
3	OVER MOLDING FOR SATA 7P 90°, 45P PVC, BLACK	P-SATPV-0003	1
2	SATA 7P 90° CONN G/F, SOLDER TYPE, W/O PIN HOLE	PBQ-043BB-A1-0	1
1	SAS CABLE, 30AWG, RED PVC	CAB-SAT-D-30SA	A/R
P/N	DESCRIPTION	ITEM NO.	Q.T.Y

GENERAL TOLERANCE X.± 0.50 .X± 0.20 .XX± 0.10 .XXX± 0.05	ANGLE TOLERANCE X°± .X°± .XX°± .XXX°±	DRAWN HSIO	DATE 2016.07.21	
MATL SEE BOM	FINISH SEE NOTES	CHECKED	DATE	
SCALE N/A	UNIT mm	APPROVED	DATE	PART NUMBER. 300-10111-01
SHEET 1 OF 1				DRAWING NO. 300-10111
				SIZE A4
				REV. X1