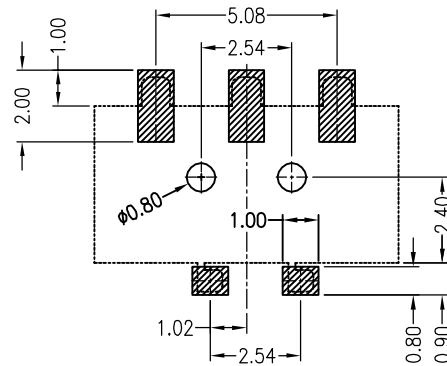
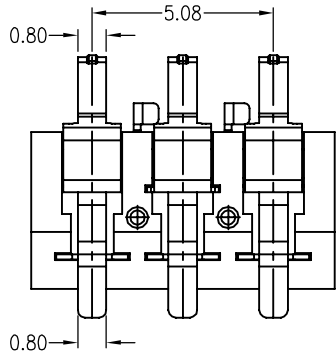
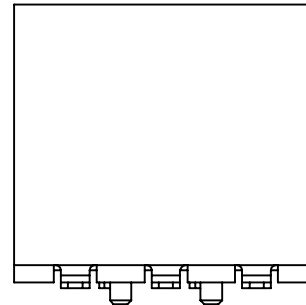
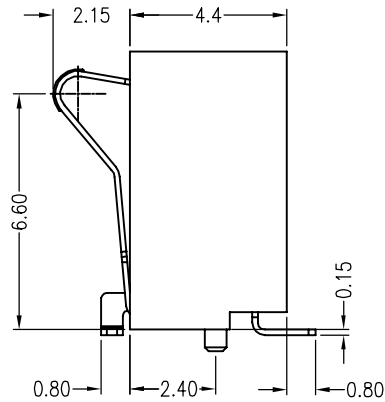
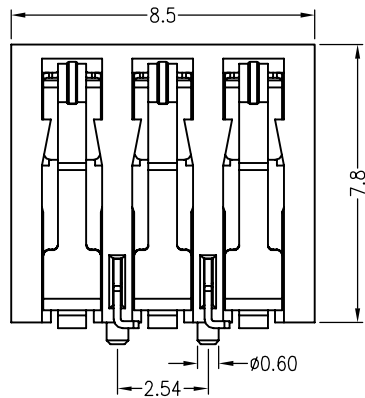
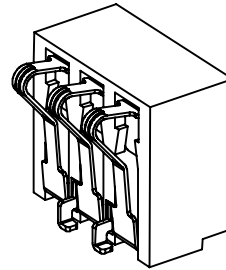
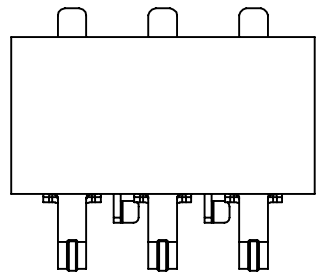


REV.	ECN. NO.	DESCRIPTION	ENG	DATE
X1		ISSUED	Jesse Mo	06/12/14'



RECOMMENDED PCB LAYOUT
COMPONENT SIDE

NOTES:

- Current Rating: 2A
- Insulation Resistance: 500MΩ Min
- Contact Resistance: 30mΩ Max
- Dielectric Withstanding Voltage: 300V AC
- Temperature Range: -50°C to +105°C
- Normal Force at Working Position: 80g min.
- Durability: 5000 Cycles
- Material:
Housing: LCP, UL94V-0, Color: Black
Contact: Phosphor Bronze,
Gold Flash over 40u" Nickel overall.
Solder Plate: Brass,
80u" Matte Tin over 40u" Nickel overall.
- RoHS Compliant

ORDER INFORMATION

BATR-20 03 - B K 1 0 T 2T
① ② ③ ④ ⑤ ⑥ ⑦ ⑧

- CONNECTOR:
BATR: Battery Connector, Right Angle Type
- TYPE:
20: H=7.8mm, SMT Type
- POSITIONS:
03: 03 Positions
- INSULATOR MATERIAL:
B: LCP
- INSULATOR COLOR:
K: Black
- CONTACT PLATING:
1: Gold Flash
- SHIELD PLATING:
0: Without Shield
- PACKING
T: Tray

GENERAL TOLERANCE X.± .X± 0.38 .XX± 0.25 .XXX± 0.13	ANGLE TOLERANCE X°± .X°± .XX°± .XXX°±	DRAWN Jesse	DATE 06/12/14'	
FINISH SEE NOTES	MATL SEE NOTES	DESIGN	DATE	
SCALE N/A	UNIT mm	CHECKED	DATE	PART NUMBER: BATR-2003-BK10T2T
SHEET 1 OF 1		APPROVED	DATE	DRAWING NO. GT23-200344
				SIZE A4 REV. X1

ITEM	NAME	Q'TY	DESCRIPTION	MATERIAL	FINISH / COLOR	NOTE
1						