

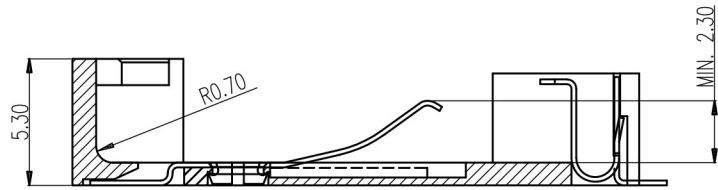
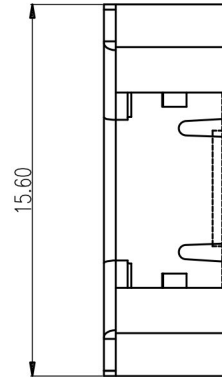
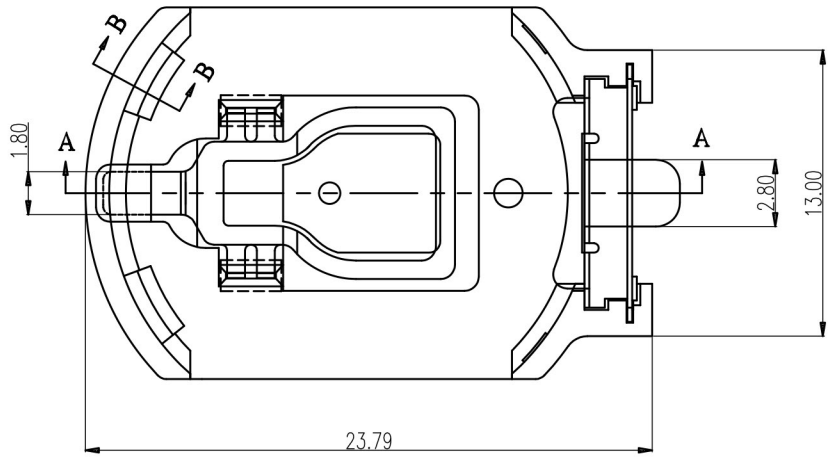
PROPRIETARY INFORMATION  
COMPANY CONFIDENTIAL

| REV. | ECN. NO. | DESCRIPTION | ENG    | DATE      |
|------|----------|-------------|--------|-----------|
| A    |          | INITIAL     | Knight | 08/10/15' |

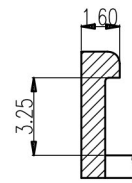
ORDER INFORMATION

BATV-20 02 - K D 1 0 R  
① ② ③④⑤⑥⑦

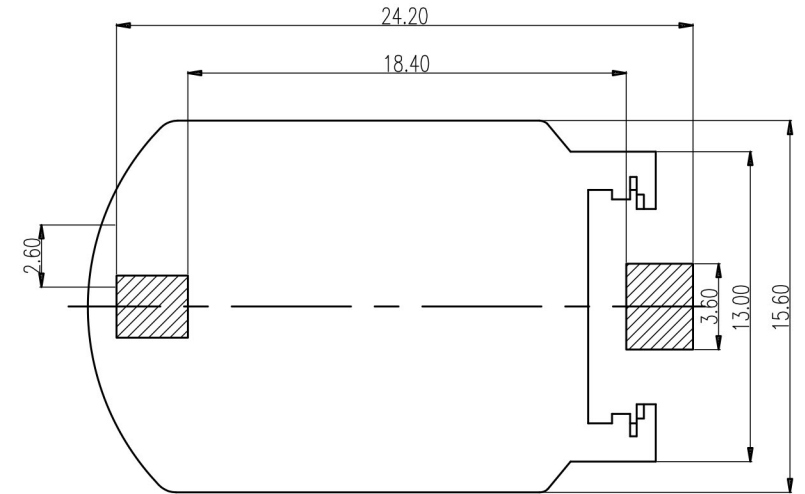
1. TYPE:  
BATV-20: BATTERY HOLDER FOR CR2032
2. POSITIONS:  
02: 02 POSITIONS
3. INSULATOR MATERIAL:  
K: PPS
4. INSULATOR COLOR:  
D: BROWN
5. CONTACT PLATING:  
1: GOLD FLASH
6. SHIELD PLATING:  
0: NICKEL SHIELD
7. PACKING:  
R: TAPE&REEL



Section A-A



Section B-B



Recommended P.C.B. Layout  
Layout Tolerance = ± 0.05 mm

RoHS Compliant

| ITEM | NAME    | Q'TY | DESCRIPTION                                     | NOTE  |
|------|---------|------|---|-------|
| 2    | CONTACT | 02   | PHOSPHOR BRONZE, GOLD FLASH MIN PLATING OVERALL |       |
| 1    | HOUSING | 1    | PPS   | BROWN |

|   |   |                          |                   |
|---|---|--------------------------|-------------------|
| GENERAL TOLERANCE<br>X ± 0.50<br>.X ± 0.40<br>.XX ± 0.30<br>.XXX ± 0.20 | ANGLE TOLERANCE<br>X° ± 5.0°<br>.X° ± 3.0°<br>.XX° ± 2.0°<br>.XXX° ± 1.0° | DRAWN<br><i>knighe</i>   | DATE<br>08/10/15' |
| MATL<br>SEE BOM   | FINISH<br>SEE NOTES   | CHECKED                  | DATE              |
| SCALE<br>N/A  | UNIT<br>mm  | APPROVED<br><i>River</i> | DATE<br>08/10/15' |
| SHEET 1 OF 1  |   |                          |                   |

|                                     |                         |
|-------------------------------------|-------------------------|
|                                     |                         |
| TITLE:<br>Battery Holder for CR2032 |                         |
| PART NUMBER:<br>BATV-2002-KD10R     |                         |
| DRAWING NO.<br>GT26-210563          | SIZE<br>A4<br>REV.<br>A |