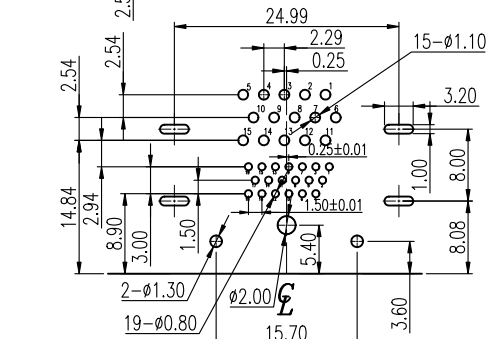
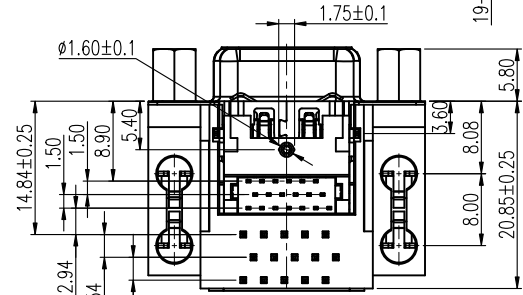
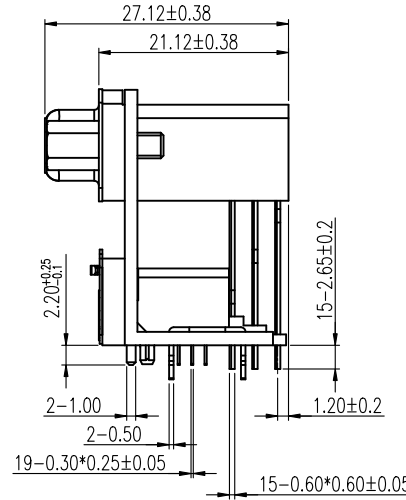
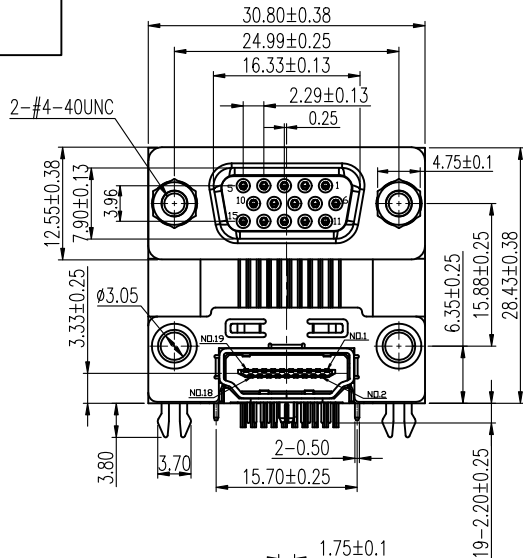
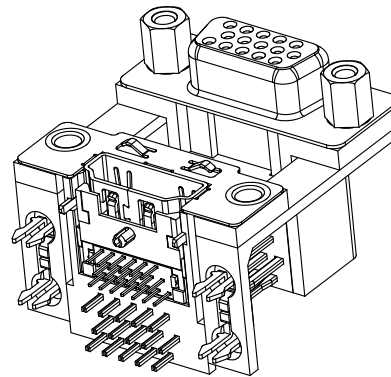


PROPRIETARY INFORMATION  
COMPANY CONFIDENTIAL

REV.	ECN. NO.	DESCRIPTION	ENG	DATE
A		INITIAL	Sun	4/10/2015



RECOMMENDED P.C.B LAYOUT  
INSPECTION DIMENSION:(A)~(M)



NOTES:

- VGA
  - Voltage: 30 VAC(RMS) Max.
  - Current Rating: 3 Ampere per Contact
  - Contact Resistance: 25 Milliohms Max.
  - Insulation Resistance: 5000 Megohms Min.
  - Dielectric Withstanding Voltage: 1000 VAC(RMS)
  - Total Mating Force: 6.0 Kgf Max.
  - Total Unmating Force: 1.2 Kgf Min.
  - Operating Temperature: -55°C to +85°C
- HDMI
  - Voltage: 30 VAC(RMS) Max.
  - Current Rating: 0.5 Ampere per Contact
  - Contact Resistance: 30 Milliohms Max.
  - Insulation Resistance: 100 Megohms Min.
  - Dielectric Withstanding Voltage: 500V DC(RMS)
  - Total Mating Force: 4.5 Kgf Max.
  - Total Unmating Force: 1.0 Kgf Min.
  - Operating Temperature: -55°C to +85°C

PART NUMBER:

DSHR-21 34 - 2 1 1 0 T  
① ② ③ ④ ⑤ ⑥ ⑦

1.CONNECTOR:

DSHR-21: D-SUB HIGH DENSITY 15 FEMALE/HDMI  
19-POS. FEMALE DIP TYPE

2.POSITIONS:

34: 34 POSITIONS

3.INSULATOR MATERIAL:

2: PBT+LCP

4.INSULATOR COLOR:

1: BLACK+BLUE

5.CONTACT PLATING:

1: GOLD FLASH

6.SHIELD PLATING:

0: NONE SHIELD

7.PACKING:

T: TRAY

8	SCREW	2	FREE-CUTTING BRASS,80u" NICKEL PLAING OVERALL
7	GOSKET	1	STAINLESS STEEL
6	BOARDLOCK	4	BRASS,TIN 100u" PLATING OVERALL
5	SHELL(D-SUB)	1	SPCC,80u" NICKEL PLAING OVERALL
4	SHELL(HDMI)	1	SUS,80u" NICKEL PLAING OVERALL
3	CANTACT(DSUB+HDMI)	15+19	BRASS,GOLD FLASH PLATING ON CONTACT AREA,100u" TIN PLATING ON SOLDER AREA,50u" NICKEL UNDER PLATING OVERALL
2	HOUSING(D-SUB)	1	PBT+30%GF,COLOR BLUE 661C
1	HOUSING(HDMI)	1	LCP+30%GF,COLOR BLACK
ITEM	NAME	Q'TY	DESCRIPTION

GENERAL TOLERANCE	ANGLE TOLERANCE	DRAWN	DATE	
X.±0.50 .X±0.38 .XX±0.25 .XXX±0.15	X°± 5.0° .X°± 3.0° .XX°± 2.0° .XXX°± 1.0°	Sun	4/10/15'	
MATL	SEE BOM	CHECKED	DATE	TITLE: D-SUB HIGH DENSITY 15 FEMALE/HDMI 19-POS. FEMALE DIP TYPE
FINISH	SEE NOTES	APPROVED	DATE	PART NUMBER: DSHR-2134-2110T
SCALE	N/A	UNIT	mm	DRAWING NO. GT26-210452
SHEET	1 OF 1		River 4/10/15'	SIZE A4 REV. A