

Technical Requirement:

Bracket:

1. MATERIAL: SPTE, the plating thickness is 0.6um min, bright acid finish;
2. Solder bracket to shoulder of F conn.

F CONNECTOR:

1. Dimension spec per SCTE 02 2006:
 - 1.1. Ref plane opening diameter: 4.32mm minimum, 6.10mm maximum
 - 1.2. Ref plane outer diameter: 7.11mm minimum, 8.00mm maximum
 - 1.3. Positive contact point depth: 5.08mm maximum
 - 1.4. Full thread depth: 8.26mm minimum
 - 1.5. Mating male center conductor clearance: 9.65mm minimum
 - 1.6. Center conductor guide inner diameter: 5.08mm maximum
 - 1.7. The front face (reference plane) of the threaded "F" port shall be 0.1" minimum, 0.13" maximum

2. Insulator displacement not permitted when applying an axial force: 15kGf minimum
3. Contact shall accept center conductor diameter range of $\varnothing 0.5\text{mm} \sim \varnothing 1.07\text{mm}$
4. Pull-out force of a new connector, for a standard 59 series cable center conductor (typically 20AWG, 0.032" to 0.034"; 0.81 mm), shall be an average of 200 grams-force and 150 grams-force minimum after 10 successive insertions and extractions using a 0.041" (RG6) diameter pin.
5. IR Reflow 260 °C Peak Temperature 5 Seconds
6. Comply with MIL-STD-810E, Method 507.3, Procedure III
7. Interface shall comply with ANSI/SCTE 02 2006

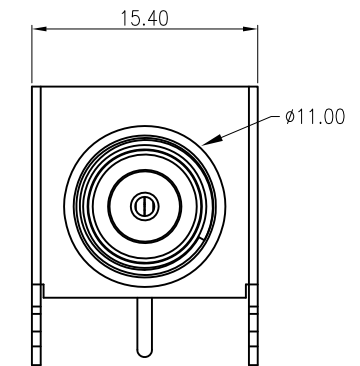
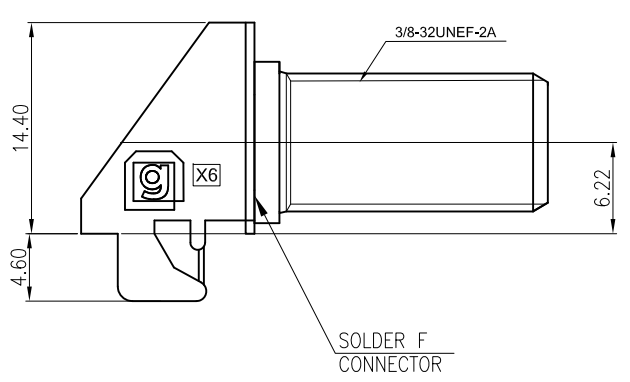
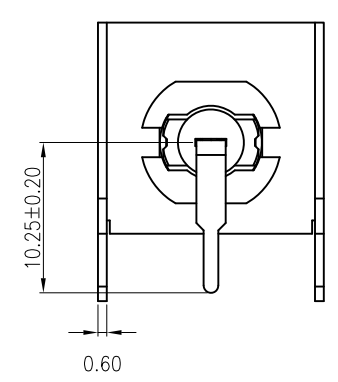
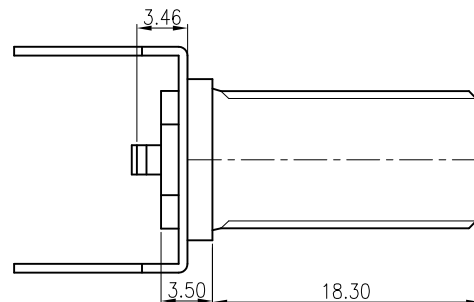
Electrical Specification:

10. 75ohm ± 0.0000 input impedance
11. Return Loss: 23dB@5MHz~1GHz
12. Dielectric withstand voltage: 1.0kVrms, 60Hz AC, 1 minute Without Breakdown
13. Center resistance 20m ohm maximum Outer resistance 10m ohm maximum

GENERAL

- 1) ROHS 6/6 COMPLIANT
- 2) PATENT PENDING.

REV.	ECN. NO.	DESCRIPTION	ENG	DATE
X1		INITIAL	AXL	8/16/12'
X2		design updated	cake	8/17/12'
X3		REVISE NOTES 4 AND ADD PATENT PENDING	AXL	8/17/12'
X4		remove insertion & extraction force requirement	cake	9/05/12'
X5		REVISE NOTES 4	AXL	9/05/12'
X6		add "G" log	cake	9/18/12'



No.	P/N	Description	Material	Qty	Finish
1	GT14-600290-1	BODY	BRASS or Zn	1	Cu8um, Ni1-4um plating
2	GT17-300232-2	CENTER PIN	BRONZE	1	Cu1um, Sn2-6um plating
3	GT14-600290-3	INSULATOR A	PA46	1	UL94V-0, Black
4	GT14-600290-4	INSULATOR B	PA46	1	UL94V-0, Black
5	GT14-600290-5	Washer	ZN or SPCC	1	Cu8um Ni1-8um plating
6	GT17-600471-6	BRACKET	SPTE	1	T=0.6mm
7		SOLDER PASTE		1	

**PRELIMINARY
NOT RELEASED**

GENERAL TOLERANCE X.± .X±0.20 .XX±0.20 .XXX±0.20	ANGLE TOLERANCE X°± .X°± .XX°± .XXX°±	DRAWN AXL	DATE 8/16/12'	
MATL SEE BOM	FINISH SEE NOTES	CHECKED	DATE	
SCALE 2:1	UNIT mm	APPROVED	DATE	PART NUMBER. GT17-300232
SHEET 1 OF 1				DRAWING NO. GT17-300232
				SIZE A1 REV. X6