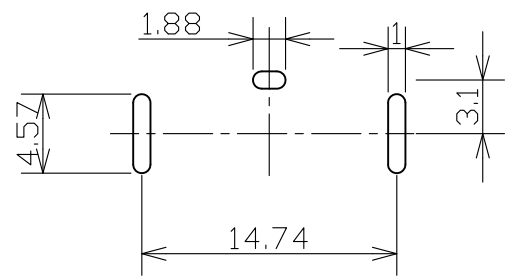
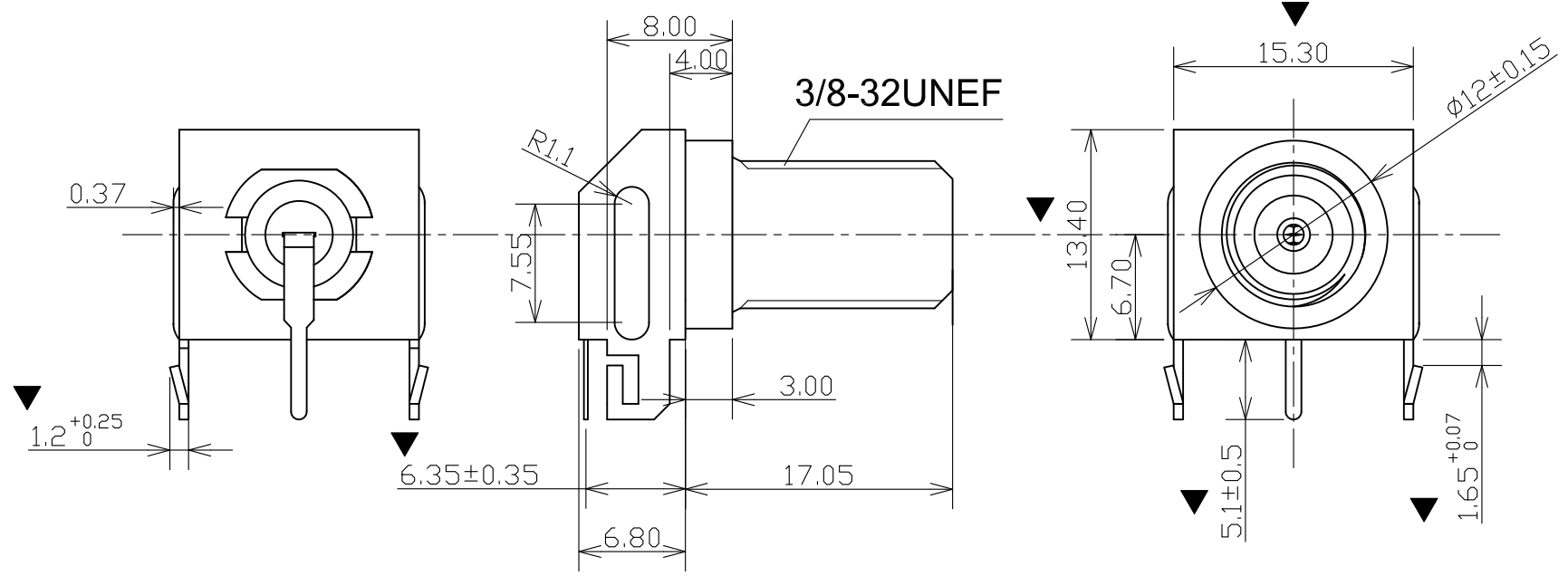


REV.	ECN. NO.	DESCRIPTION	ENG	DATE
A	ECN-1410-004	initial	Eva	10/30/2014



**PCB MOUNT (1:1)**  
Tolerance:±0.05

- NOTES:**
1. MATERIAL : BOM list;
  2. Torque specification requirement is 35 in-lbs;
  3. This requirement will be tested 10 times (install, tighten and remove);
  4. Pull-out force of a new connector, for a standard 59 series cable center conductor (typically 20AWG, 0.032" to 0.034"; 0.81 mm), shall be an average of 200 grams-force and 150 grams-force minimum after 10 successive insertions and extractions;
  5. ROHS compliant.
  6. ▼SHOW KEY DIMENSIONS

6	GT23-601220-6	BRACKET	1	SPT	T=0.60mm
5	GT110-60548	WASHER	1	65Mn	Sn plating
4	GT23-601220-4	DIELECTRIC	1	PPS WHITE	
3	GT23-601220-3	DIELECTRIC	1	PPS WHITE	
2	GT23-601220-2	CENTRE PIN	1	Qsn6.5-0.4	Sn plating
1	GT23-601220-1	BODY	1	Zn Alloy	Nickel plating
ITEM	P/N	NAME	Q'TY	DESCRIPTION	NOTE

GENERAL TOLERANCE X±0.75 .X±0.40 .XX±0.25 .XXX±0.10	ANGLE TOLERANCE X°±2° .X°±2° .XX°±2° .XXX°±2°	DRAWN Eva	DATE 06/11/2014'	
MATL	FINISH	CHECKED	DATE	
SCALE 1:1	UNIT mm	APPROVED	DATE	PART NUMBER. N0020002200
SHEET 1 OF 1				DRAWING NO. GT23-601220
				SIZE A4 REV. A