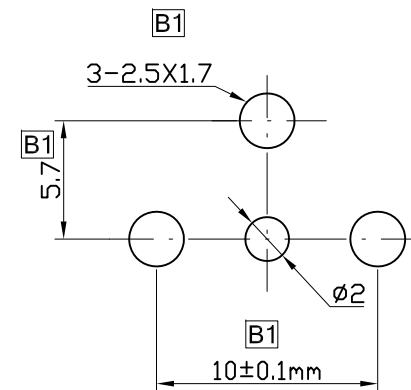


Dimensions of PC board holes(Commend)




Notes

1. EU RoHS Compliant
2. The surface of metal part should be degreased and clean
3. The unspecified tolerance
  - <6 ±0.2mm
  - 6-20 ±0.3mm
  - >20 ±0.4mm

**[B]** ORDER INFORMATION  
GTI09-30066

5	Radio-Frequency Needle	1	H62 t=0.3	CuSn
4	Base	1	SPTe t=0.4 [B1]	
3	Insulator	2	Fibreglass [B1]	
2	Contact Cover	1	QSn6.5-0.1 t=0.25	CuSn
1	Outer Conductor	1	H65 t=0.4	CuNi [B1]
No.	NAME	QTY	MATERIAL	MATERIAL

				TOLERANCE		 <small>1015 GRANT STREET S.E. ATLANTA, GA 30315</small> a Genesis Electro-Mechanical Company		TITLE: IEC PAL BRACKET CONNECTOR			
LINEAR		ANGLES		PART NO.				GTI09-30066			
[B1]	DIMS UPDATE, MATERIAL BOM LIST UPDATE	EVA	12/26/13	X. ±	X° ±	APPD:		MAT'L:		DWG NO. GTI09-30066	
[B]	REVISE INSULATOR MATERIAL & COLOR	Vegas	11/11/10	.X	.X° ±	CHKD:		FINISH:		UNITS SCALE SHEET REV	
[A]	ISSUED	WGV	6/15/08	.XX	.XX° ±	DRWN: AXL		Q'TY:		MM NONE 1 OF 1 B1	
REV	ECN NO.	NAME	DATE	.XXX	.XXX° ±						