

- NOTES:
- *MATERIAL
HOUSING: NYLON46, UL 94V-0, COLOR:BLACK
 - [B] CONTACT: BRASS or PHOSPHOR BRONZE
GOLD PLATING ON CONTACT AREA
80u" TIN PLATING ON SOLDER TAIL
BOTH OVER 30u" NICKEL UNDER-PLATING
 - [B] BOARD LOCK: BRASS
80u" TIN PLATING OVER 30u" NICKEL
 - *MECHANICAL
INSERTION FORCE: 45N MAX.
WITHDRAWAL FORCE: 10N MIN.
DURABILITY: 500 CYCLE
 - *ELECTRICAL SPECIFICATION
CURRENT RATING: 1.5 AMPERE PER CONTACT
CONTACT RESISTANCE: 30 MILLIOHMS MAX.
INSULATION RESISTANCE: 1000MEGOHMS MIN
DIELECTRIC WITHSTANDING VOLTAGE: 500V AC.
 - *ENVIRONMENTAL
OPERATING TEMPERATURE: -55°C TO +85°C

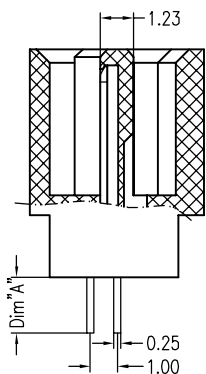
ORDER INFORMATION:

GTi07-20098- X - X - X
1. 2. 3.

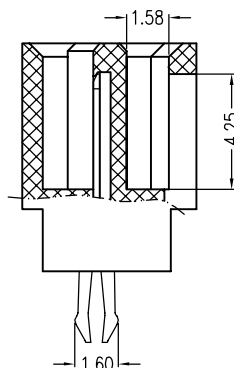
1. X: GOLD PLATING OPTION:
X = A, GOLD FLASH
X = B, 5u"
X = C, 10u"
X = D, 15u"
X = F, 30u"

2. X: CONTACT MATERIAL:
X = B, BRASS
X = P, PHOSPHOR BRONZE

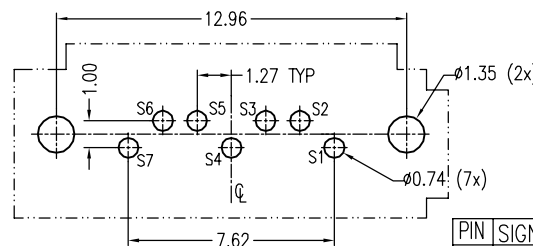
3. X: DIM "A" OPTION
X = 2, DIM "A" = 2.10-2.25 mm [B]
X = 3, DIM "A" = 3.30 mm



SECTION A-A



SECTION B-B



P.C.B Layout (T=1.60mm)
COMPONENT SIDE
Tolerance: ±0.05

PIN	SIGNAL NAME
S1	GND
S2	A+
S3	A-
S4	GND
S5	B-
S6	B+
S7	GND

TOLERANCE	
LINEAR	ANGLES
X. ±	± 3'

GENESIS
TECHNOLOGY, INC
A Genesis Electro-Mechanical Company

7F, No. 191, Sec. 2
Chung-Yang Rd.,
Tu-Cheng City,
Taipei Hsien, Taiwan

TITLE: SATA 7PIN CONNECTOR
VERTICAL & DIP TYPE

PART NO. GTi07-20098-X-X-X

DWG NO. GTi07-20098

[B]	UPDATE DRAWING	Jesse	05/14/12'	.X ± 0.38	APPD:	MAT'L:
[A]	INITIAL RELEASE FROM Rev.X01	Kevin	02/19/08'	.XX ± 0.25	CHKD:	FINISH:
REV.	ECN NO.	NAME	DATE	.XXX ± 0.20	DRWN: Jesse	Q'TY:

UNITS	SCALE	SHEET	REV
m.m.	NONE	1 OF 1	B