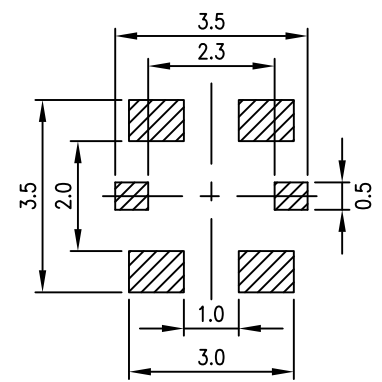
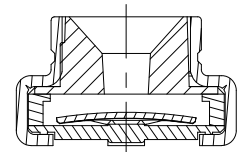
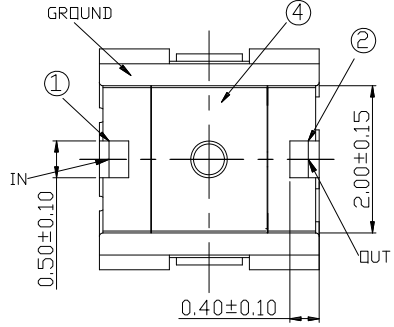
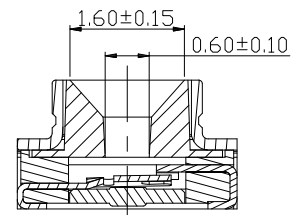
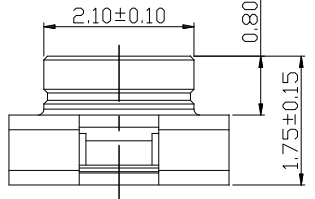
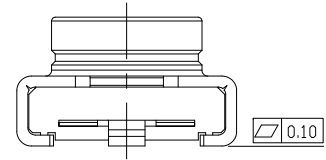
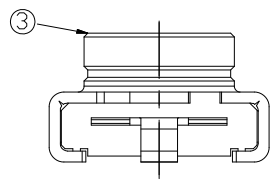
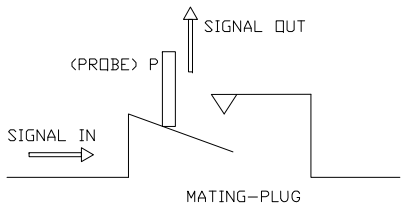
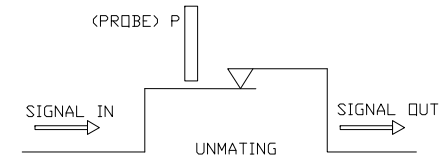
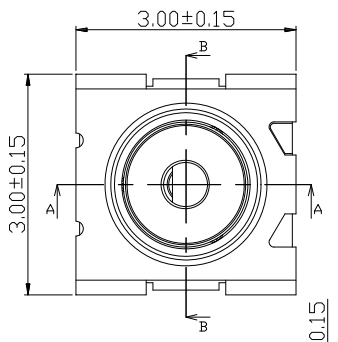


| REV. | ECN. NO. | DESCRIPTION | ENG | DATE |
|------|----------|-------------------------|-----|----------|
| X1 | | INITIAL | AXL | 7/18/12' |
| A | | RELEASED FOR PRODUCTION | AXL | 2/8/13' |
| B | | ADD PCB LAYOUT | AXL | 4/2/13' |



NOTES:

- CURRENT RATING: 1 A.
- VOLTAGE RATING: 250 VAC.
- FREQUENCY RANGE: 0~6 GHz.
- IMPEDANCE: 50 ohms.
- INSULATION RESISTANCE: 500 M ohms.
- WITHSTAND VOLTAGE: 300 VAC.
- CONTACT RESISTANCE: 120 m ohms MAX.
- V.S.W.R.: 1.2 MAX.(DC~3GHz), 1.4 MAX.(3~6GHz).
- INSERTION LOSS: 0.10 dB MAX.(DC~3GHz). 0.20 dB MAX. (3~6GHz).
- OPERATING TEMPERATURE RANGE: -40C ~ +85C.
- RoHS COMPLIANT.

C PART. NUMBER

RFCV-22 01 B N 3 X R
 ① ② ③ ④ ⑤ ⑥ ⑦ ⑧

- CONNECTOR:
RFCV: RF CONNECTOR VERTICAL
- TYPE
22: U.FL 1.75mm TALL PCB MOUNT SMT SWITCH
- POSITIONS
01: 01 POSITION
- INSULATOR MATERIAL
B: LCP
- INSULATOR COLOR
N: NATURAL
- CONTACT PLATING
3: GOLD 5u" ON CONTACT AREA
- SHIELD PLATING
H: GOLD 2u" ON CONTACT AREA
K: SILVER 40u" ON CONTACT AREA
- PACKING
R: TAPE AND REEL

| | | | | |
|-----|--------------------|---------------------|-------------------------|------|
| 4 | Case | Engineering plastic | None | 1 |
| 3 | Outer terminal | Copper Alloy | SEE PART NUMBER/Ni 50u" | 1 |
| 2 | Output terminal(R) | Copper Alloy | Au 5u"/Ni 50u" | 1 |
| 1 | Input terminal(C) | Stainless Steel | Au 5u"/Ni 50u" | 1 |
| No. | Part Name | Material | Finish | Q'ty |

B RECOMMENDED PCB LAYOUT
TOLERANCE:±0.05mm

| | | | | |
|--|---|--------------|------------------|-------------------------------|
| GENERAL TOLERANCE .X± .X±0.40 .XX±0.30 .XXX±0.20 | ANGLE TOLERANCE X°± .X°± .XX°± .XXX°± | DRAWN AXL | DATE 7/18/12' | |
| MATERIAL SEE BOM | | DESIGN | DATE | |
| FINISH SEE NOTES | | CHECKED | DATE | PART NUMBER RFCV-2201BN3XR |
| SCALE N/A | UNIT mm | APPROVED | DATE | DRAWING NO. GT17-300215 |
| SHEET 1 OF 1 | | | | SIZE REV. A/C |