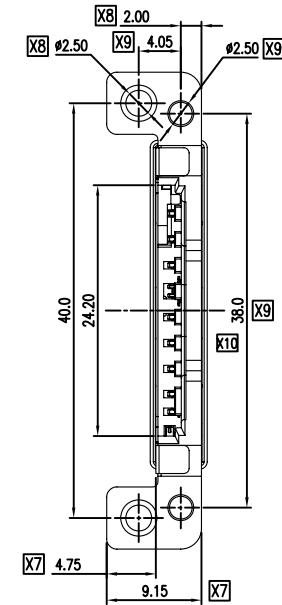
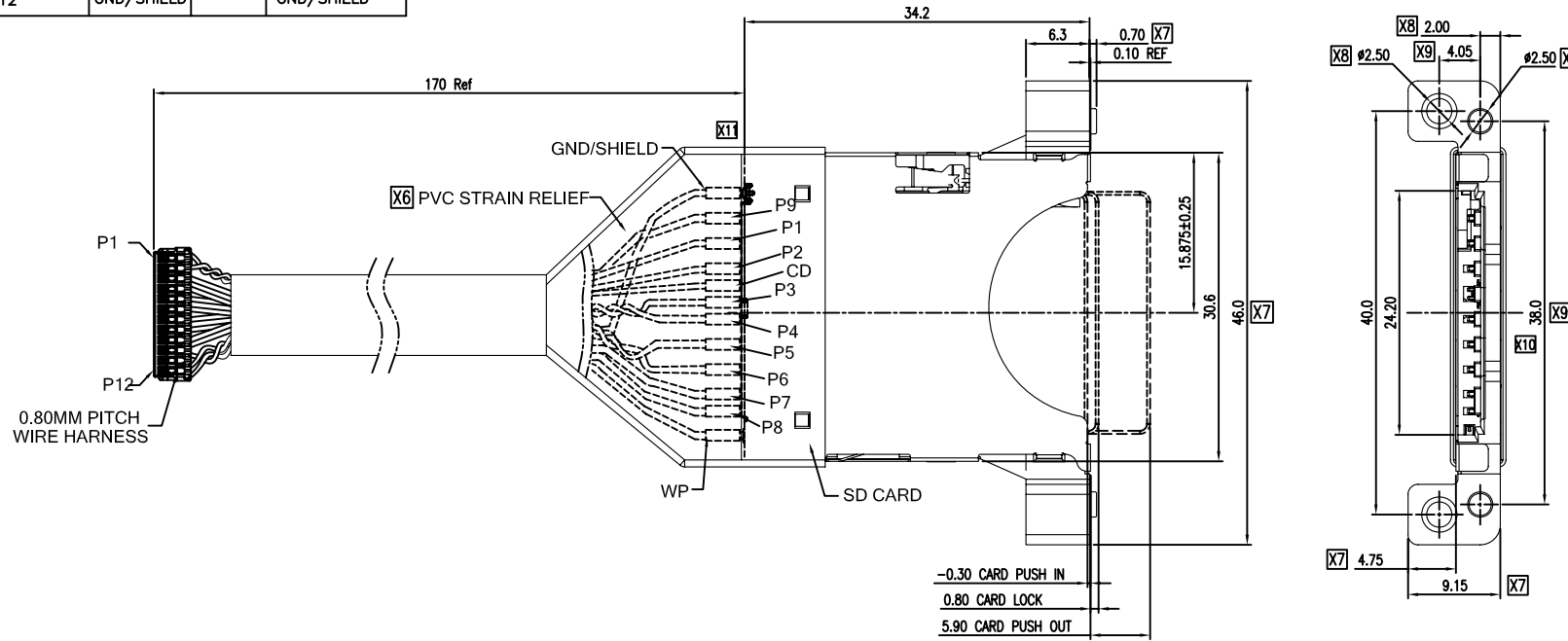


12P CONN	SIGNAL	TWISTED	SD CARD CONN.
P1	3.3V	YES	P4
P2	GND		P3
P3	DAT 0		P7
P4	DAT 1		P8
P5	DAT 2		P9
P6	DAT 3		P1
P7	WP		WP
P8	CD		CD
P9	CMD		P2
P10	GND	YES	P6
P11	CLK		P5
P12	GND/SHIELD		GND/SHIELD

REV.	ECN. NO.	DESCRIPTION	ENG	DATE
X1		ISSUED	PAT	09/19/12'
X2		REVISE DRAWING	PAT	09/20/12'
X3		CORRECT PIN ASSIGNMENT	AXL	09/20/12'
X4		CORRECT SD CARD CIRCUIT	DANIEL	09/21/12'
X5		ADD PVC STRAIN RELIEF	DANIEL	10/08/12'
X6		MODIFY DWG	TERRY	10/19/12'
X7		MODIFY DWG	TERRY	01/08/13'
X8		MODIFY DWG	TERRY	01/10/13'
X9		MODIFY DWG	TERRY	01/19/13'
X10		MODIFY DWG	TERRY	05/16/14'
X11		ADD SHRINKABLE TUBE	TERRY	08/27/14'



- PART. NUMBER**  
SDCC-20 12 - A K \* S I 01  
① ② ③④⑤⑥⑦
- ① CONNECTOR:  
SDCC-20: SD CARD CONNECTOR
  - ② POSITION:  
12: 12 POSITIONS
  - ③ INSULATOR MATERIAL:  
A: PBT
  - ④ INSULATOR COLOR:  
K: BLACK
  - ⑤ CONTACT PLATING:  
1: GOLD FLASH  
5: 15u" GOLD
  - ⑥ SHIELD PLATING  
S: NICKEL PLATING
  - ⑦ PACKING  
T: TRAY

SD CARD CIRCUIT:		WP	GROUND	WP	GROUND
WP	GROUND	○	○	○	○
CD	PIN3	○	○	○	○
WITHOUT CARD		CARD INSERTED WRITE PROTECT : LOCK		CARD INSERTED WRITE PROTECT : UNLOCK	

GENERAL TOLERANCE X. $\pm$ 0.50 .X $\pm$ 0.38 .XX $\pm$ 0.25 .XXX $\pm$ 0.15	ANGLE TOLERANCE X° $\pm$ 2° .X° $\pm$ 1° .XX° $\pm$ .XXX° $\pm$	DRAWN TERRY 10/19/12'	DATE 10/19/12'	
MATERIAL: SEE BOM		DESIGN TERRY 10/19/12'	DATE 10/19/12'	
FINISH: SEE NOTES		CHECKED	DATE	PART NUMBER: SDCC-2012-AKXST01
SCALE: N/A	UNIT: mm	APPROVED	DATE	DRAWING NO. GT17-250109
SHEET 1 OF 1				SIZE: A4 REV: X11